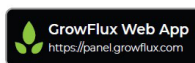
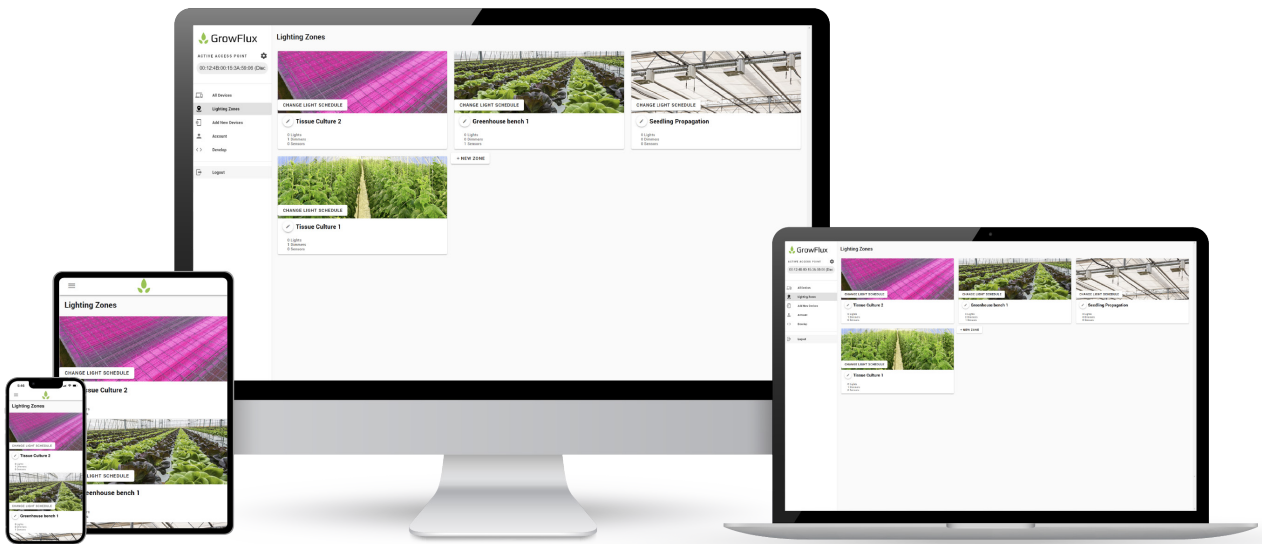




P.L. LIGHT SYSTEMS

THE LIGHTING KNOWLEDGE COMPANY

LIGHTING CONTROLS





GrowFlux Universal Dimmer (Single Channel)

Schedule and dim up to 50 luminaires. Connects to the 0-10V dimming interface on your grow light for precision scheduling and dimming. Includes Basic Support*; subscription required for some features and advanced support. For use in North America. Use of this product is subject to the GrowFlux Terms of Service.

GrowFlux Access Point

Connect up to 200 GrowFlux Mesh devices. Includes Basic Support*; subscription required for some features and advanced support. For use in North America. Use of this product is subject to the GrowFlux Terms of Service.



GrowFlux Pro Access Point

Connect up to 500 GrowFlux Mesh devices - IP65 enclosure. Includes sealed ethernet cable and sealed power cable. Includes Basic Support*; subscription required for some features and advanced support. For use in North America. Use of this product is subject to the GrowFlux Terms of Service.



GrowFlux Precision PAR® (1 Sensor)

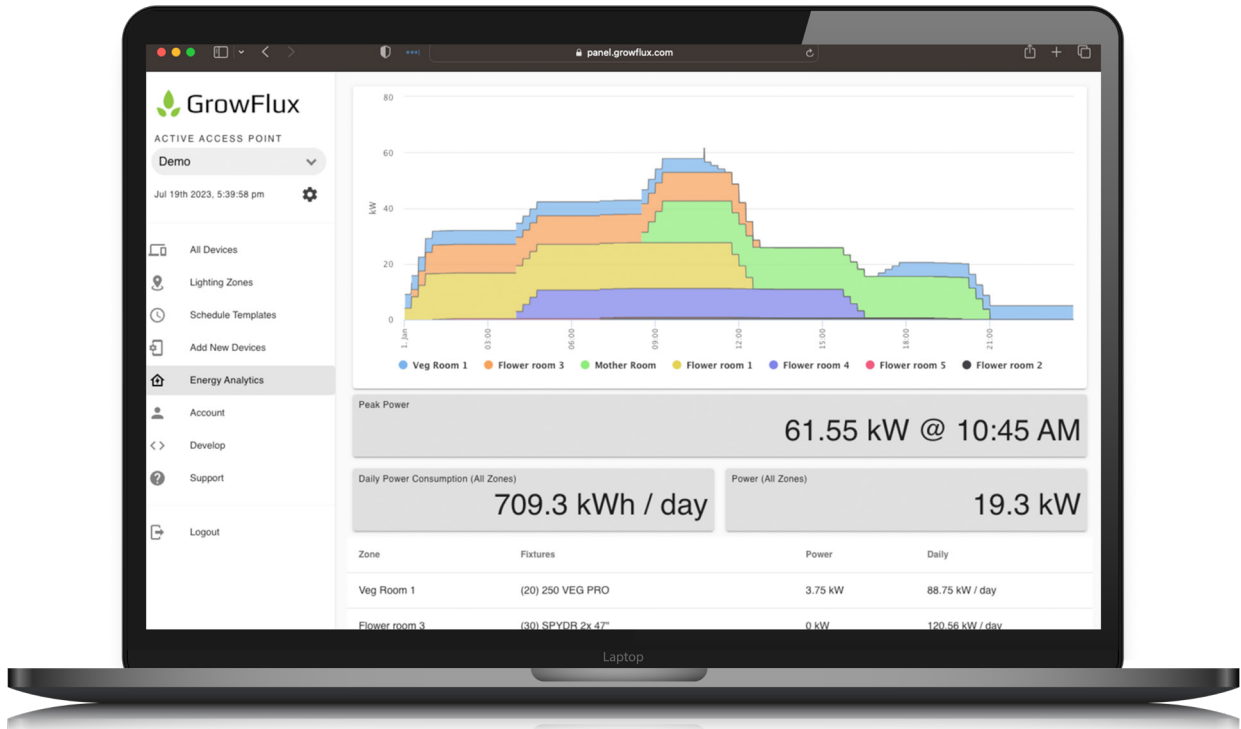
Precision PAR monitors PPFD and DLI and enables responsive lighting controls with any GrowFlux mesh enable luminaire or GrowFlux lighting controller.

GrowFlux Precision PAR® (2 Sensors)

Precision PAR monitors PPFD and DLI and enables responsive lighting controls with any GrowFlux mesh enable luminaire or GrowFlux lighting controller.

DEVICE ACCESSORIES	
GrowFlux Dimmer Tee	For use with Universal Dimmer to daisy-chain the dimming line for up to 50 luminaires. IP67
GrowFlux Dimmer Extension Cable (5m)	For use with Universal Dimmer to daisy-chain the dimming line for up to 50 luminaires. 5m length; IP67
GrowFlux Dimmer Extension Cable (3m)	For use with Universal Dimmer to daisy-chain the dimming line for up to 50 luminaires. 3m length; IP67
GrowFlux Dimmer Extension Cable (2m)	For use with Universal Dimmer to daisy-chain the dimming line for up to 50 luminaires. 2m length; IP67
GrowFlux Dimmer Screw Terminal Adapter	For use with Universal Dimmer to connect 0-10V luminaire. IP67
GrowFlux Waterproof Power Cable (3M)	Used to establish a waterproof power connection for GrowFlux devices. 3 m; IP67

*Basic Support includes online support via email support@growflux.zendesk.com and through GrowFlux's support website <https://growflux.zendesk.com/>. Response times for basic support requests are typically one (1) business day, depending on request. †Premium Support includes guaranteed one day responses to support requests, 7 days per week, and "best effort" same day responses to urgent requests.



CONTROL PLATFORM SUBSCRIPTIONS (billed annually)

	SUPPORT	ENERGY ANALYTICS	API ACCESS [‡]	USERS	FACILITIES	CONTROLLERS
GrowFlux Smallholder Platform Subscription	Premium [†]	✓	✗	1	1	10
GrowFlux Commercial 1 Platform Subscription	Premium [†]	✓	✓	3	1	20
GrowFlux Commercial 2 Platform Subscription	Premium [†]	✓	✓	10	3	30

[†]Premium Support includes guaranteed one day responses to support requests, 7 days per week, and 'best effort' same day responses to urgent requests.

[‡]API access is priced separately by device.

API SUBSCRIPTIONS (billed annually)

GrowFlux Universal Dimmer API & Pro Controls Platform Subscription	<ul style="list-style-type: none"> API Access & Control Push schedules from external control systems to GrowFlux lighting devices; real time API control; acquire lighting & energy data, and more.
--	---