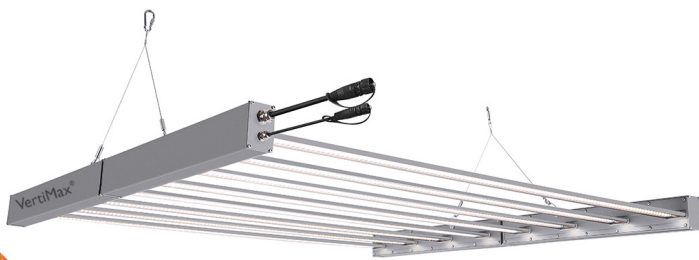
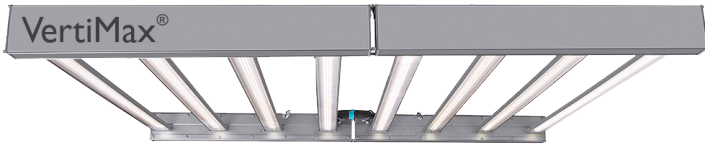




# P.L. LIGHT SYSTEMS

THE LIGHTING KNOWLEDGE COMPANY

T: 905.563.4133  
 Toll Free: 1.800.263.0213  
 F: 905.563.0445  
 www.pllight.com



FIXTURE	VertiMax
Project	
Notes	

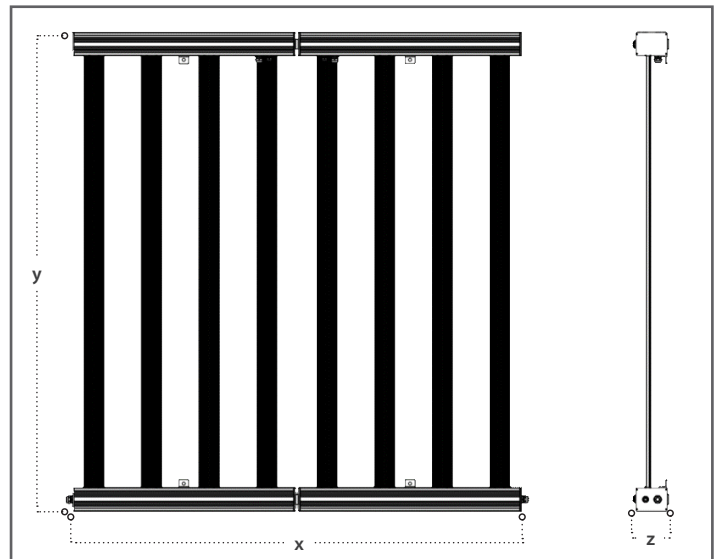


## TECHNICAL SPECIFICATIONS†

Rated Main Voltage	120-277V			277-480V		
Amperage (max)	120V	240V	277V	347V	400V	480V
	5.37A	2.67A	2.31A	1.85A	1.60A	1.34A
Power	640W					
Light Source	LED					
Photon Efficacy (350-800nm)	2.8 μmol/J					
Photon Flux (350-800nm)	1800 μmol/s					
Power Factor	>0.95					
Input Frequency	50/60Hz					
Application Environment	Intended for use in Indoor (Stacked / Non-Stacked) or Greenhouse (Propagation) controlled environments. Max Ambient Temp of 40°C					
Lifetime	L90B5 at 50,000 hrs**					

†Accurate to ± 10%

\*\*Scientifically extrapolated calculation for Par Maintenance of light is L90B5 at 50,000hrs (this means that expected lifespan of LEDs is defined as ≤5% of luminaires can depreciate below the expected 90% PAR maintenance within 50,000 hours).



## DIMENSIONS

Length (x)	Width (y)	Height (z)	Weight	
			120-277V	277-347V
45.05 in (1144 mm)	46.76 in (1187 mm)	3.07 in (78 mm)	27.56 lb. (12.5 kg)	33.07 lb. (15.0 kg)

## SPECIFICATION

1. FIXTURE	2. WATTAGE	3. VOLTAGE	4. DIMMING	5. COLOUR SPECTRA	6. CORDS
VertiMax (Integrated Driver)	640W	120V-277V 277V-480V	1-10V* Dim	Full Spectrum	8FT AC Power Cord w/Flying Leads 8FT AC Power Cord to RST 3P GRN Male End

\*The VertiMax is designed as a 1-10V sourcing supply, and is compatible with most major environmental control systems that use 0-10V sinking protocols.

Limited warranty for a period of five (5) years. from date of invoice